



Pre-Registration Form

July 18, 2009

9:30 am - 2:00 pm

COST: \$10
PLEASE PRINT

NAME

ADDRESS

CITY

ST

ZIP

CHURCH

PHONE #

EMAIL

Register by mailing:

Nadine Houghton

PO Box 43

Angola, NY 14006

Please make checks payable to:

Wesleyan Women, WNY District

Pre-Registration due: July 11

Saturday, July 18, 2009
(the Saturday BEFORE District Conference)
9:30 a.m. - 2:00 p.m.

The Gateway Center
31 Water Street
Jamestown, NY 14701

Schedule:

9:30 am - registration

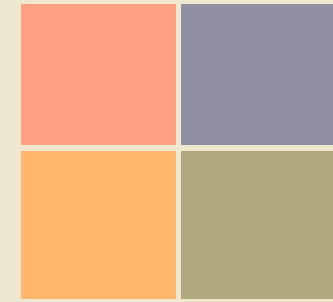
9:45 - Brunch in St. Susan's Center

10:30 - Overview of Gateway Center/Tours

11:30 - Re-gather for time of worship and refreshments

12:00 - 2:00 pm - Amy Fleishhauer,
"Recognizing Human Trafficking in WNY,"
followed by intercessory prayer

*** also included - updates on our ongoing partnership with Hope Refugee Services and oversees missionaries



Redefining "Neighbor"



Women's Conference
2009





Hope Refugee Services, directed by Houghton graduate **Bonnie Macbeth**, is a faith-based, non-profit organization serving refugee families in the city of Buffalo. The ministry serves between 500-600 refugees a month. Their Drop-in Center offers immediate help for short-term needs, support for long-term challenges and referrals to other refugee service providers in the community. The popular after-school program provides tutoring to middle school students. The staff reaches out to many Muslim and Buddhist families hoping to draw their hearts to Jesus through loving-kindness.

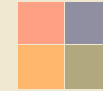


www.iib@iibuff.org

Our guest speaker, **Amy Fleishhauer** from International Institute of Buffalo will be sharing about her mission to WNY and how we can recognize human trafficking in Western New York.

In 2008, 10,686 people from all walks of life and many countries around the world benefited from IIB's programs and services, including:

- 301 refugees, including 161 new arrivals from Burma, Iraq, Iran, and Somalia.
- 3,579 interpreting and translation clients
- 2,241 participants in the Model United Nations and other education programs
- 38 pre-certified victims of Human Trafficking
- 87 victims of Domestic Violence
- 710 other legal clients with immigration concerns
- 85 participants in the U.S. State Department's International Visitor Leadership Program



The Gateway Center, is a multi-faceted ministry center committed to helping meet the needs of the poor in southern Chautauqua County. We will tour the facility, which includes services such as-

- ☞ St. Susan's Center - daily provides nutritional meals for those in the community who enjoy far too few. In 2008, served 135,761 meals to those in need.
- ☞ Community Helping Hands Thrift Stores - household furniture, appliances, clothing and small household items for lower income families.
- ☞ Soaring Up Skate Park - newly open for community youth
- ☞ Alpha Cafe